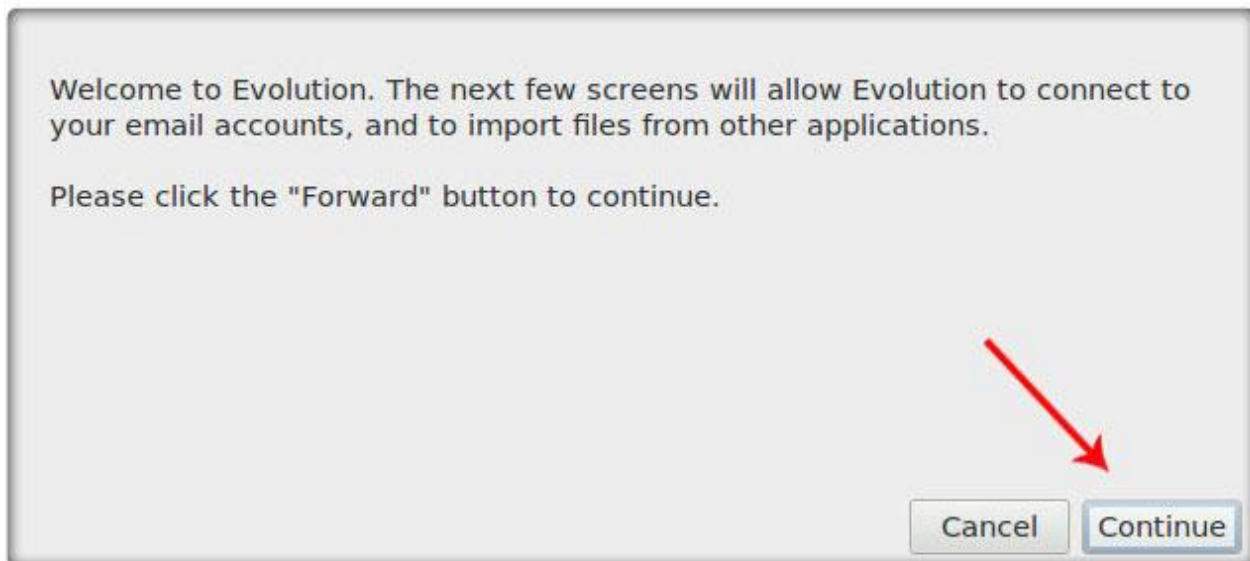


Configurazione SSL di una casella casella@aruba.it mediante client Evolution Mail

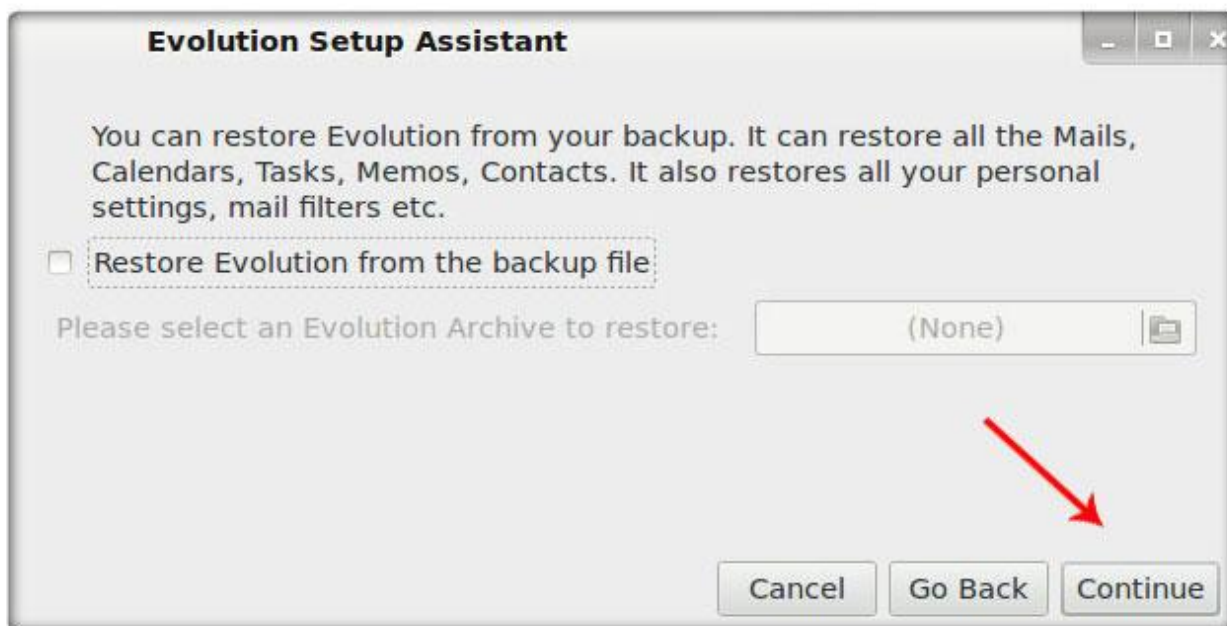
Avviare il client di posta dal menù "Applicazioni"



Click su "Continue" per passare allo step successivo



Click su **"Continue"**



Informazioni Generali Account:

- Nome: **Mario Rossi**
- E-mail: nomecasella@aruba.it

Se si vuole rendere **predefinito l'account** che si sta configurando, selezionare l'apposita opzione, come mostra l'immagine che segue, e click su **"Continue"**:

Evolution Setup Assistant

Please enter your name and email address below. The "optional" fields below do not need to be filled in, unless you wish to include this information in email you send.

Required Information

Full Name:

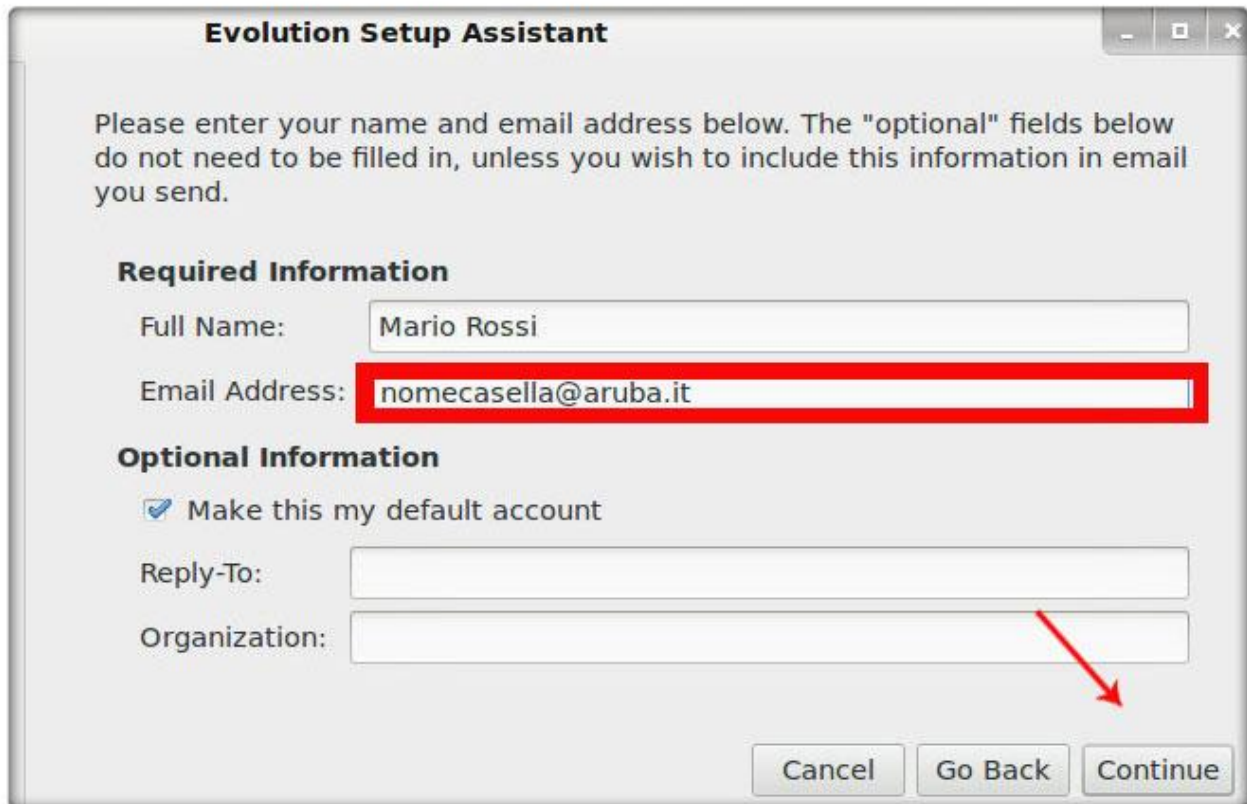
Email Address:

Optional Information

Make this my default account

Reply-To:

Organization:



Server di Posta in Arrivo:

- Server Type: **POP**
- Server: **pop3.aruba.it**
- Porta: **995**
- User Name: **nomecasella@aruba.it**
- Security: **SSL**
- Authentication Type: **Password**

Click su "**Continue**" per procedere

Server Type: POP ▼

For connecting to and downloading mail from POP servers.

Description:

Configuration

Server: pop3.aruba.it Port: 995 ▼

User Name: nomecasella@aruba.it


Security

Use secure connection: SSL encryption ▼

Authentication Type

Password ▼ Check for Supported Types

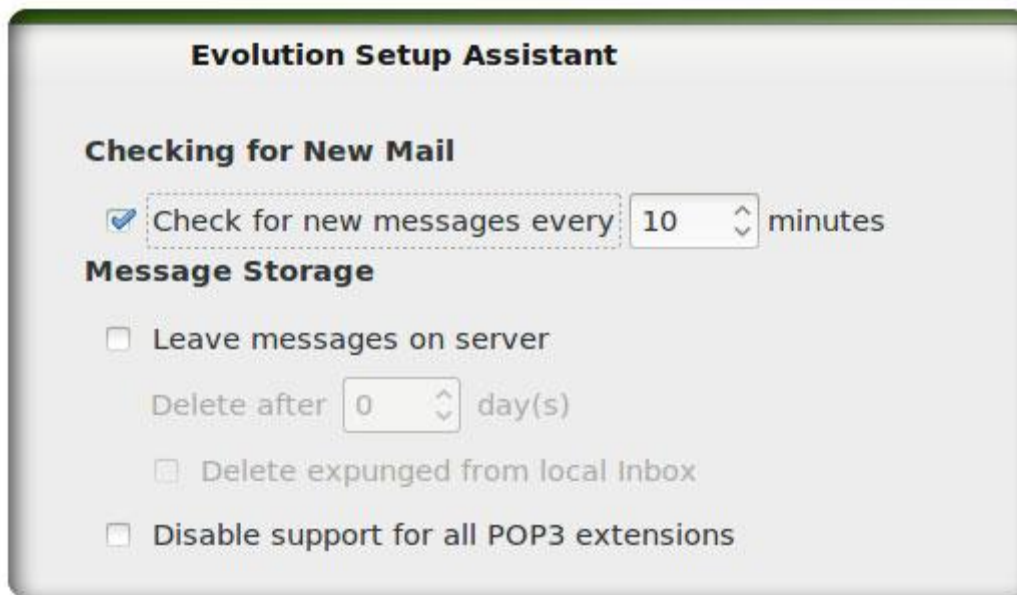
Remember password



Cancel Go Back Continue

Nel passaggio successivo rendere attiva l'opzione:

- **Check for new messages:** consente al client di aggiornare la cartella della posta in arrivo ogni 10 minuti (tempo personalizzabile);



Server di Posta in Uscita:

- Server Type: **SMTP**
- Server: **smtp.aruba.it**
- Porta: **465**
- User Name: **nomecasella@aruba.it**
- Security: **SSL**
- Authentication Type: **PLAIN**

E click su "**Continue**" per procedere

Server Type: SMTP ▾

Description: For delivering mail by connecting to a remote mailhub using SMTP.

Server Configuration

Server: smtp.aruba.it Port: 465 ▾

Server requires authentication

Security

Use secure connection: SSL encryption ▾

Authentication

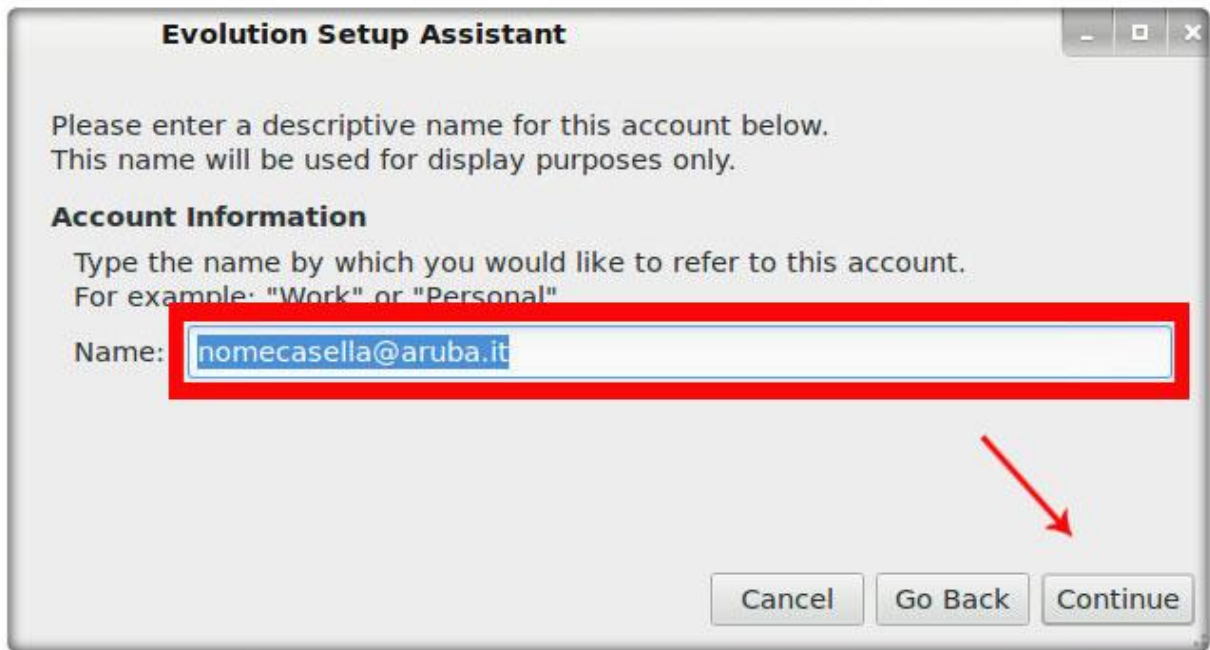
Type: PLAIN ▾ Check for Supported Types

User Name: nomecasella@aruba.it

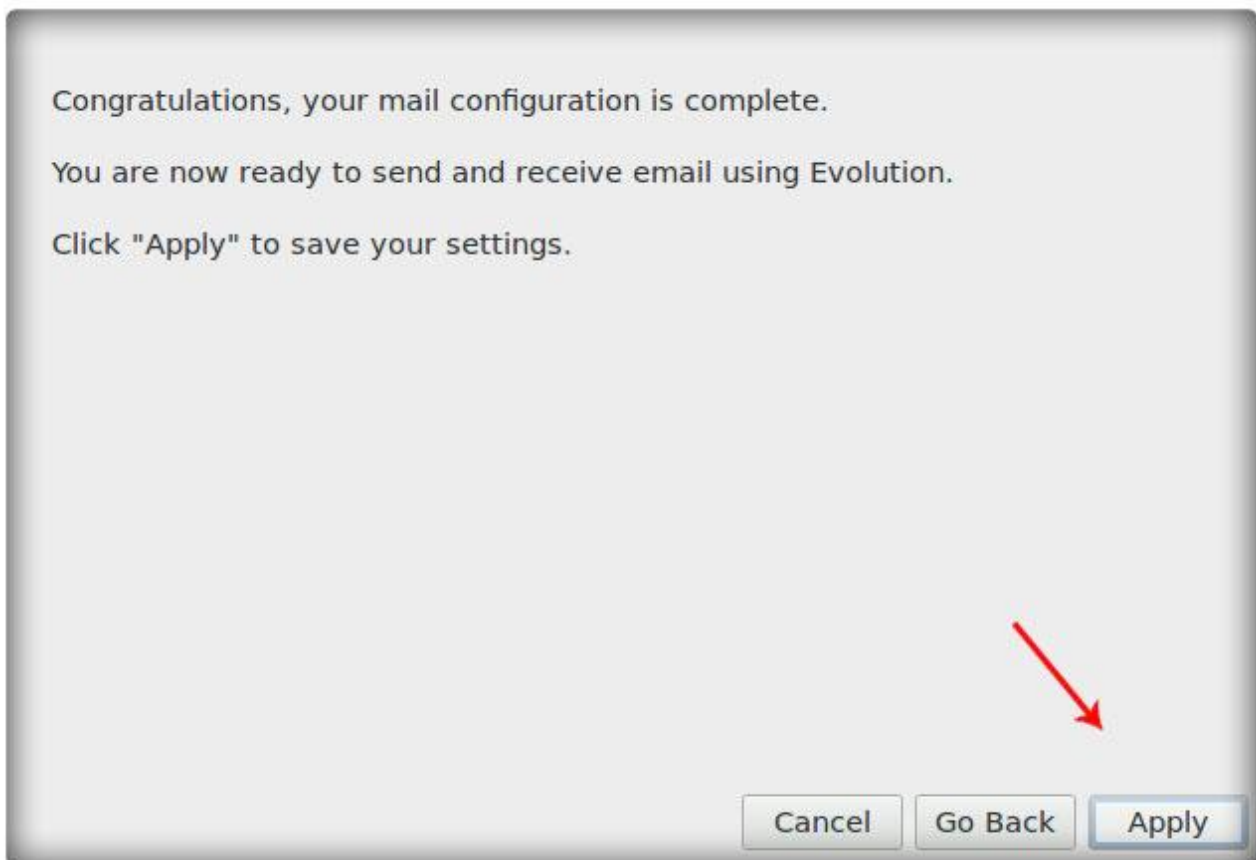
Remember password

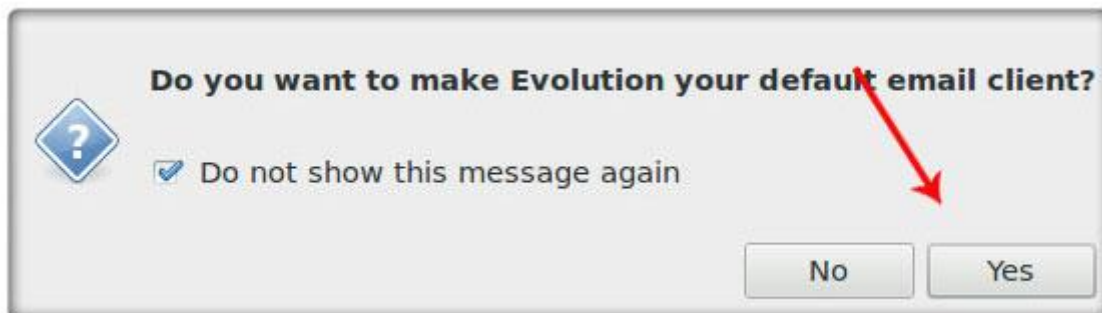
Cancel Go Back Continue

Click nuovamente su “Continue”

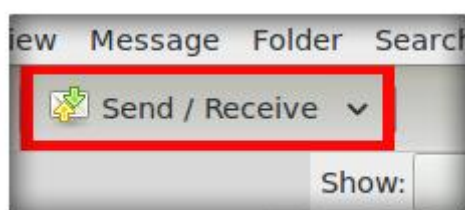


Click su **“Apply”** per salvare tutti i dati inseriti





Infine click su **"Send/Receive"** per visualizzare le modifiche apportare e utilizzare l'**account IMAP**:



Verrà richiesto, una sola volta, l'inserimento della password legata alla casella appena configurata. Digitarla nel campo apposito e click su **Ok**.

